

Evaluation with Temporary license Instructions

Download and install taking the default settings. [Universal Install Link](#)

Download the latest AlignDB for AutoCAD Zip file.

Open Browser: [AutoCAD Application Only Update Page](#)

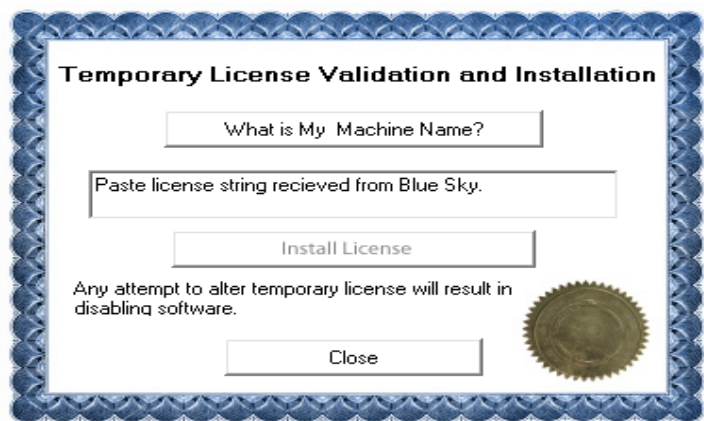
Download latest application update Currently [AlignDB2009.1.20.zip](#)

Extract contents to [c:\program files\bsdi\aligndb\](#) overwriting the existing aligndb.dvb file.

Download and install the Temporary License Installer [Download link](#)

*Use the Serial Number **550-T120763** for the installation serial number.*

Once installed you will launch "C:\Program Files\BSDI\Utility\Temporary License Installer.exe"



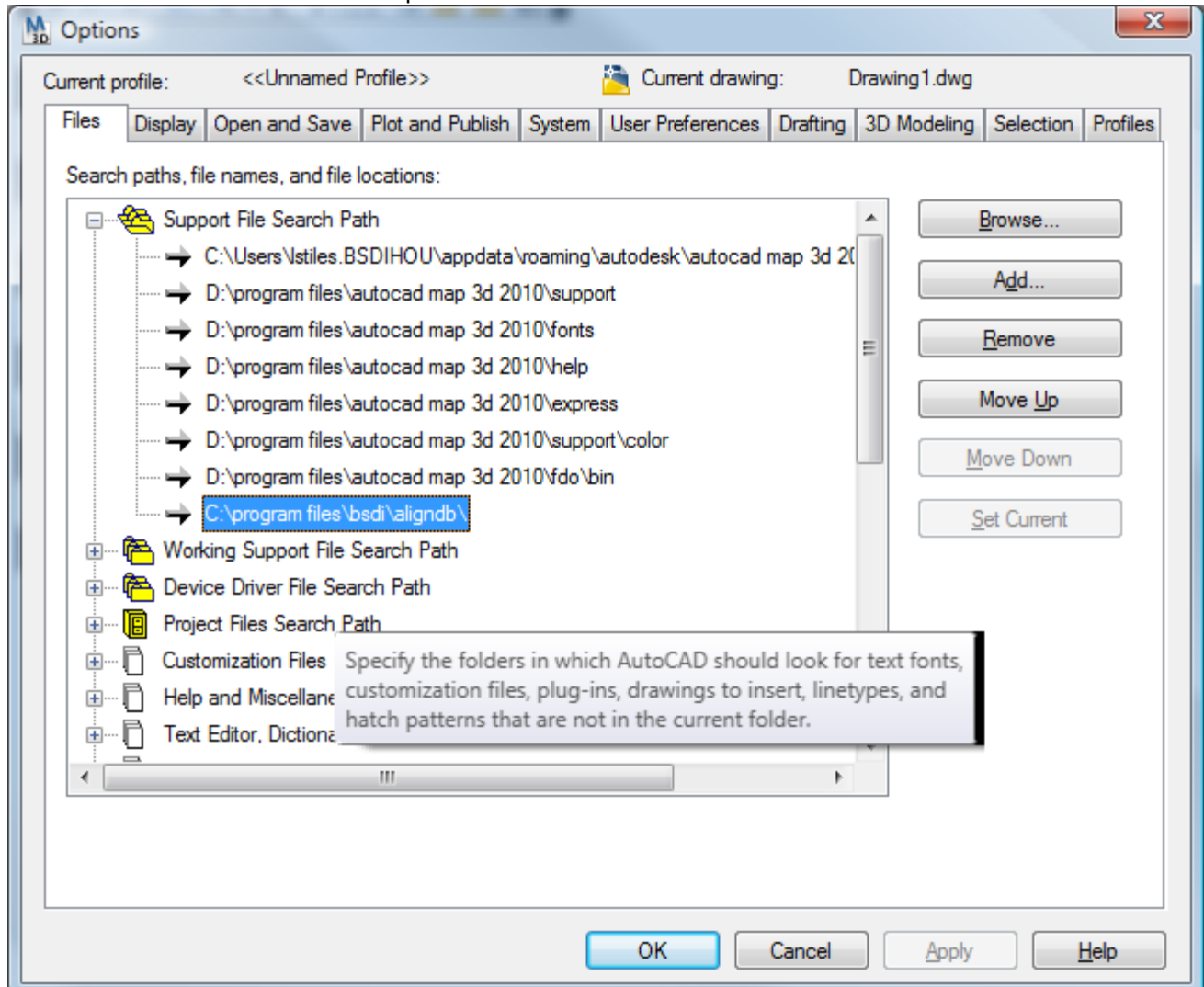
Paste Temporary license code then press install license. You may need to request the temporary license code from [Blue Sky Sales Team](#).

Setup of AlignDB within AutoCAD

Step1

Launch the AutoCAD Version of Choice.

Once in AutoCAD issue the options command



Select the files tab and the Support paths tree item.
add "C:\program files\BSDI\AlignDB" to the Support paths.
Click Apply then OK on the Options dialog.

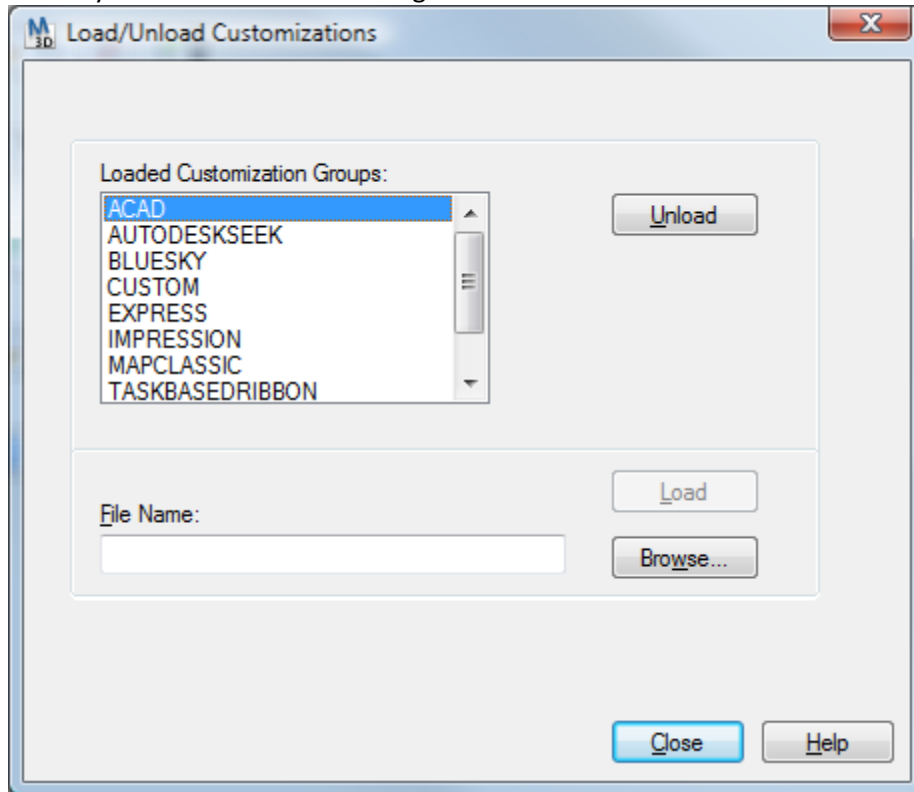
Step 2

At the AutoCAD Command line type menuload.

You will then browse to the "C:\program files\BSDI\AlignDB" directory and choose the file "adbmain"

You will then click Load. AutoCAD will load a Bluesky menu at the top and a toolbar.

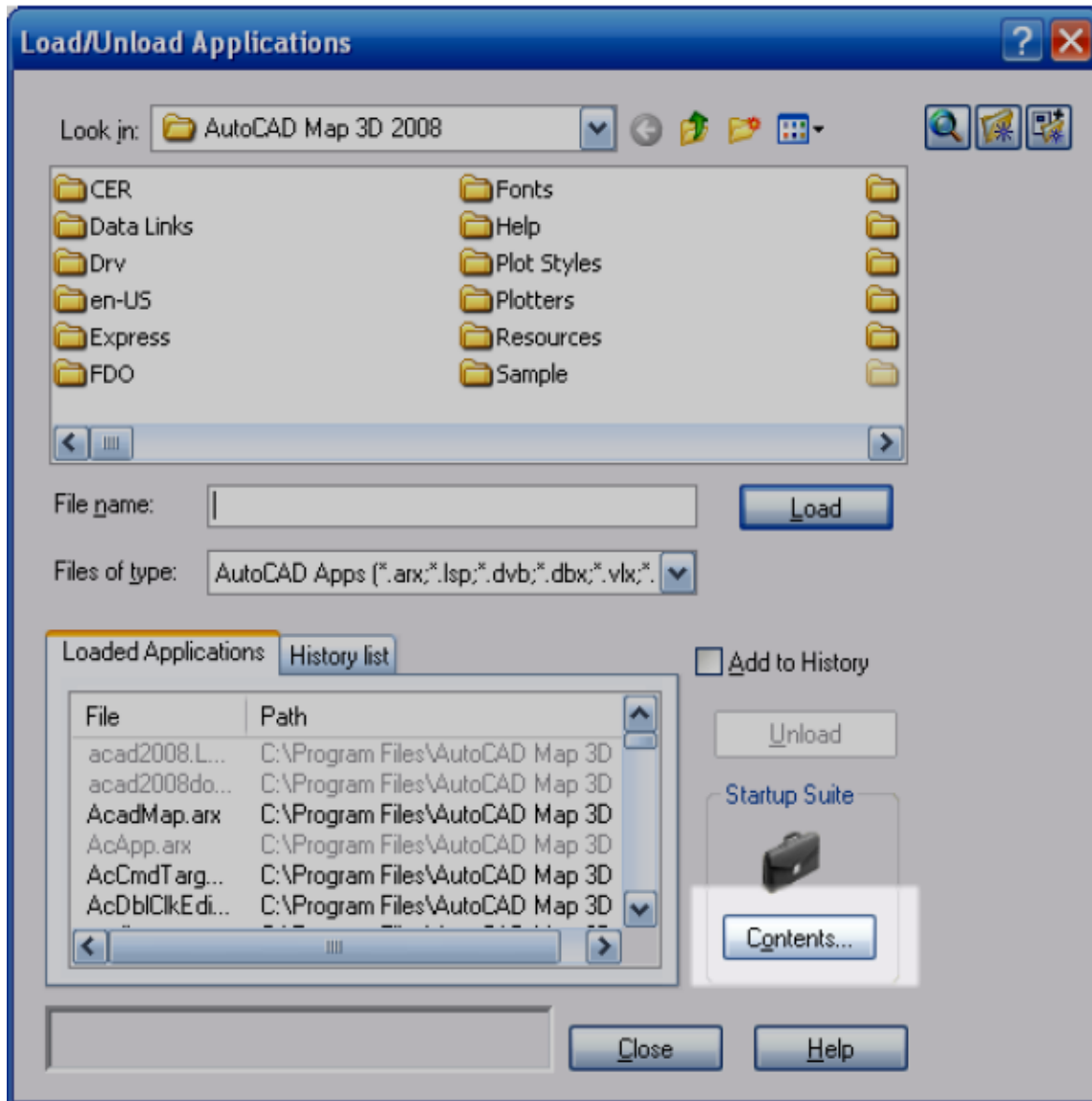
You may close the menuload dialog.

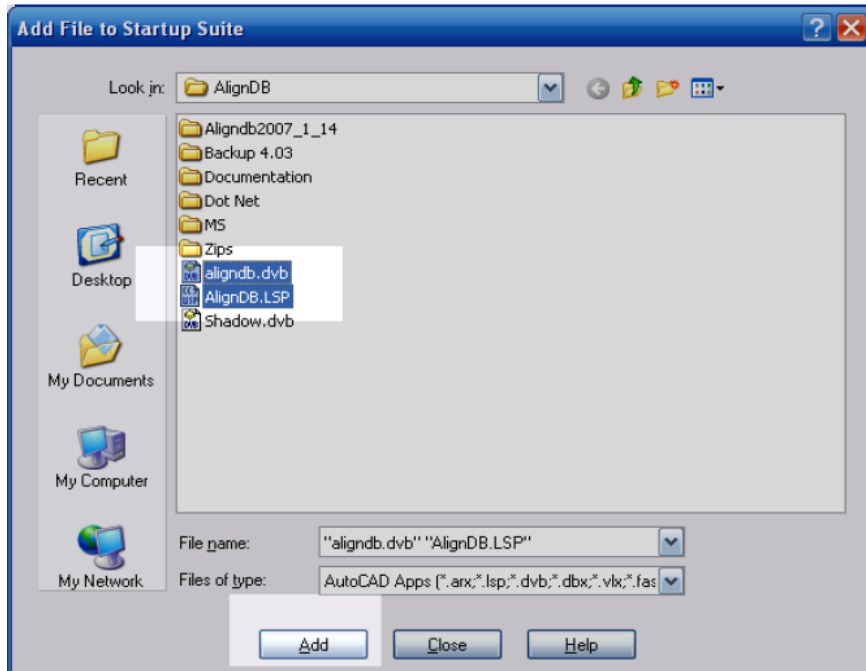


Step 3

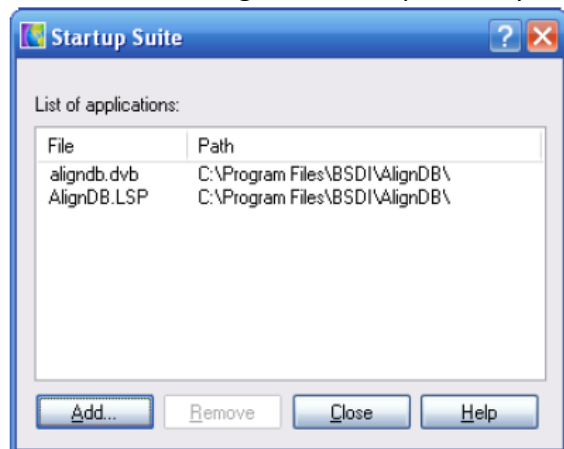
At the AutoCAD command line type `appload`

On the lower left of the load application dialog click the contents button.





You will then click add and browse to the “C:\program files\BSDI\AlignDB” directory Highlight the aligndb.lsp and the aligndb.dvb files and click add. It may take a moment to load each file the dialog will close upon completion.



You can then close each dialog.

This will complete the AlignDB for AutoCAD setup.

Note: on first launch of AlignDB you will need to select your seed file. A blank seed file is loaded in the “C:\program files\BSDI\projects” directory. It is recommend to move the seed file to a more useable directory such as a network location.